

# M2 Tool Steel

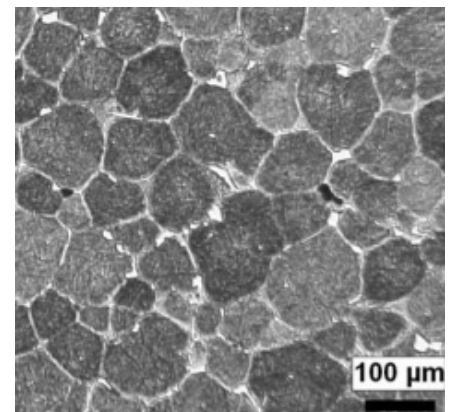
Material Composition	Amount
Chromium	3.75 - 4.50
Manganese	0.15 - 0.40
Molybdenum	4.50 - 5.50
Phosphorus	0.030 max
Sulfur	0.030 max
Silicon	0.20 - 0.45
Vanadium	1.75 - 2.20
Tungsten	5.50 - 6.75
Carbon	0.78 - 1.05
Iron	Balance



Printed Part

Binder Jet Properties	Heat Treated
Density	8.03 - 8.08 g/cc (98.5 - 99.5%)
Hardness	62 - 65 HRC
Literature Value	Hardness (HRC)
MIM M2 Tool Steel (sintered) - 1	55 - 63
MIM M2 Tool Steel (heat treated) - 1	60 - 65

Notes: (1) Metal Injection Molding: MIM: Indo-MIM®. Retrieved from <https://www.indo-mim.com/mim-downloads/>



Microstructure

ExOne disclaims all warranties and liabilities for the content hereof and makes no representations as to its accuracy or fitness for use for any purpose. Any tradenames, trademarks, or service marks of others appearing herein are used strictly nominatively and are not to be construed as implying any affiliation, connection, association, sponsorship, or approval of the owners thereof for ExOne, its products, or the content hereof.